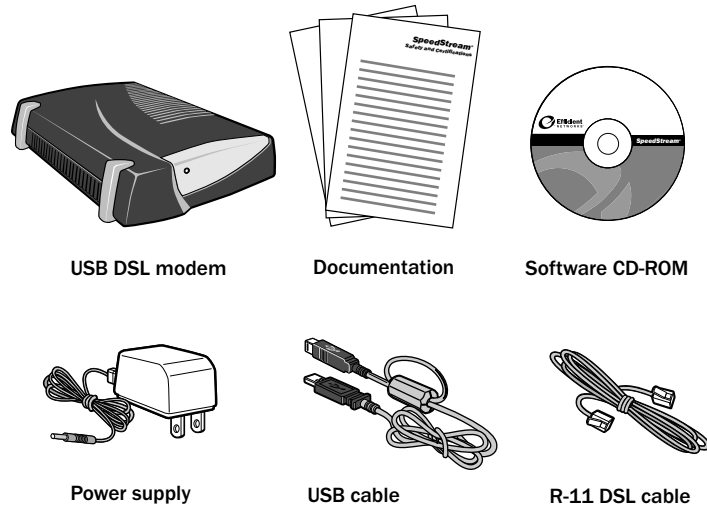


## Before you begin:

Verify that the following items came with your DSL kit:

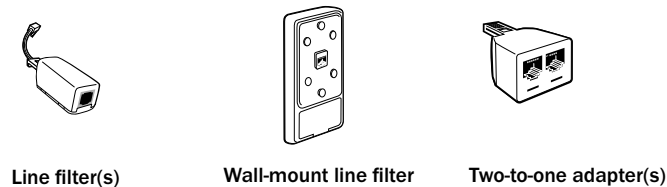


Before installing the software, make sure your PC is equipped with the following. Note that the DSL software is not installable on Macintosh® computers.

- Windows® 98 Retail, Windows® 98 Second Edition (SE), Windows® 2000 Professional, and Windows® Millennium Edition
- 32 MB RAM
- Pentium-compatible 166 MHz processor
- 20 MB free hard disk space
- 800 X 600 monitor resolution (recommended)

Before proceeding to Step 1 you will need to know your CD-ROM drive letter during software installation. To find the drive letter, double-click the My Computer icon on your desktop. Look for the CD icon and note the letter next to it. This letter is your CD-ROM drive letter.

Your service provider may include a wall-mount filter, two-to-one adapter(s), and line filter(s) in your DSL kit. If you received any of these items, follow the instructions provided in this guide for basic installation. If you need further assistance installing these items, please contact your service provider.



## Step 1 Begin Software Installation

- Turn on your computer.
- Insert your SpeedStream CD-ROM into your CD-ROM drive. Wait for a few seconds for the software installation process to begin; then follow the instructions on the screens.

If software installation does not begin automatically, then follow these steps:

\* Click the Start button on your desktop and select Run.

\* Type your CD-ROM drive letter followed by setup.exe; for example, type h:\setup.exe, where "h" represents your CD-ROM drive. Note: Your drive letter may not be "h."

If you do not know your CD-ROM drive letter, click the Browse button in the Run box. In the Look In list (shown below), select your CD-ROM drive. Then double-click setup.exe. Back in the Run box, click OK. Software installation should begin promptly; simply follow the instructions on the screens.



Completion of software installation in Step 4

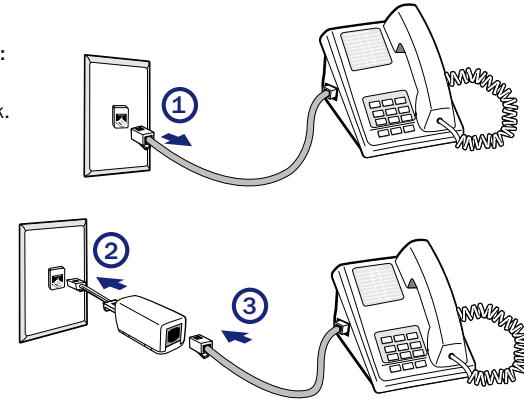
## Step 2 Install Line Filters

Devices such as fax machines, caller ID boxes, or phones that share the same phone number as your DSL account require a line filter, which prevents modem noise from disrupting the DSL signal on the phone line. Filters can be in the form of a stand-alone line filter or a wall mount filter. A filter can also be plugged into a two-to-one adapter if your DSL modem will share the same phone jack with another device.

### Stand-alone Line Filter

For each device that shares the DSL phone number:

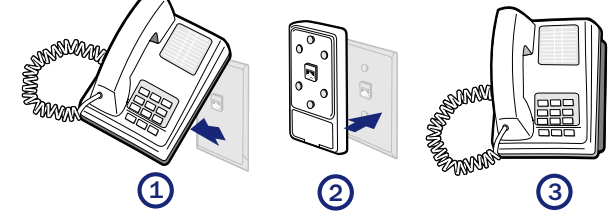
- Unplug the device's cord from the phone jack.
- Plug the filter into the phone jack.
- Plug the phone cord (or other device cord) into the filter.



### Wall Mount Filter

For a wall mount phone, install a wall mount filter:

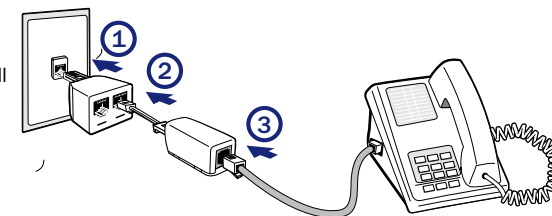
- Remove the phone.
- Connect the wall mount filter to the wall plate.
- Reconnect the phone.



### Two-to-One Adapter

If your DSL modem and another device will share the same phone jack, install a two-to-one adapter:

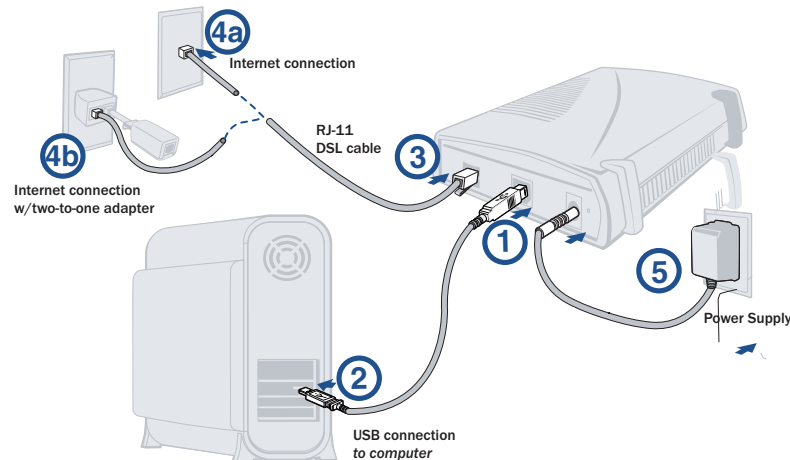
- Plug the adapter into the phone jack.
- Plug a line filter into one of the sockets of the two-to-one adapter. The other socket will be used to connect the DSL cable.
- Plug the telephone (or other device) cord into the line filter.



## Step 3 Connect the DSL Modem

### Install the USB Modem

1. Connect the USB Cable to the USB port at the rear of the modem.
2. Connect the other end to the USB port on your computer.
3. Plug the DSL cable into the DSL port on the modem.
- 4a. Plug the other end of the cable into the phone jack, or
- 4b. If using a two-to-one adapter, plug the cable into the open socket, which should already be connected to the phone jack.
5. Plug the power adapter into the power outlet and modem.



Hardware connection is complete.

## Step 4 Finish Software Installation

Follow the instructions on the remaining screens to complete software installation. You are then ready to connect to the Internet! Refer to your service provider's instructions for connecting.

*Note: If you are not prompted to "Reboot" or "Finish", make sure that all cables are properly connected.*

### Additional Features

#### Monitoring Performance

Once you have installed your DSL modem and software, you can check the status of your connection or get troubleshooting assistance by double-clicking the blue Efficient Networks "e" on your taskbar (system tray).



#### Accessing the DSL Modem Reference Guide

For more information on the features of your DSL modem and software, please see the DSL Modem Reference Guide, which you can access by following the steps below:

1. Click the Start button on your desktop.
2. Select Programs > Efficient Networks > SpeedStream DSL > Documentation.



SpeedStream® 4060

External USB DSL Modem



#### Efficient Networks, Inc.

**Corporate Headquarters**  
4849 Alpha Road  
Dallas, Texas 75244

1+972-852-1000 PHONE  
1+972-852-1001 FAX

info@efficient.com EMAIL